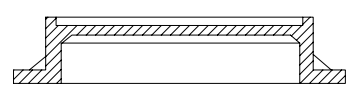
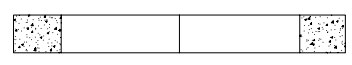


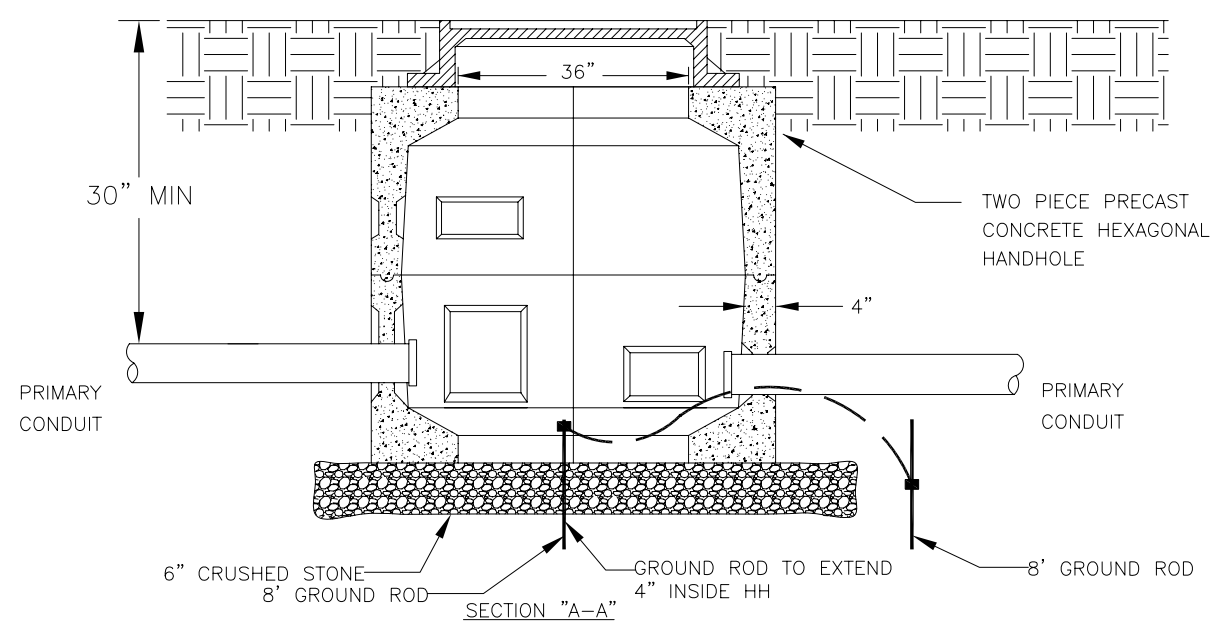
CAST IRON COVER



CAST IRON FRAME



CONCRETE RISER
SEGMENTS (AS REQ.)



SEE NOTES FOR CONSTRUCTION ON REVERSE SIDE

200 AMP LOADBREAK - 3Ø JUNCTION
600 AMP DEADBREAK - 3Ø FEED THRU

ORG. BY RAM
12-29-86
APPROVED

**PRECAST CONCRETE HEXAGONAL
ELECTRIC PRIMARY HANDHOLE**

NOTES FOR PRECAST CONCRETE ELECTRIC PRIMARY HANDHOLE (HEXAGONAL)

1. Minimum distance to any structure is 48"
(Ground must be level and unobstructed for 48")
2. Conduit size and location to be determined by Groton Utilities.
3. All conduits must be pointed to center of handhole. **Conduit routing shall adhere to Groton Utilities standard E-12.105. All conduits shall extend 3" inside the handhole knockout. PVC conduits will be fitted with bell ends and galvanized steel conduits will be fitted with grounding bushings.** All conduit openings shall be tightly sealed after installation of conduits. Bond all galvanized steel conduits inside handhole to ground rods with a minimum of #6 AWG CU stranded bare wire.
4. **Ground ring is a minimum of # 1/0 cu. bare buried 30" below ground line. Grounding connections shall be Cadweld, compression, or irreversible compression-type connections.**
5. Grading must be completed to finished grade before primary conductors or any Groton Utilities equipment can be installed.
6. All handholes shall be fitted with a metal frame and cast iron cover designed for H20 street loading with the word "Electric" cast in the cover.

LIST OF APPROVED MATERIALS

<u>ITEM</u>	<u>CAT. #</u>	<u>MANUFACTURER</u> <u>(See List)</u>
Hexagonal Handhole	H-019	A, B, C, D
Concrete Riser Segments (4 Req. per lift)	RS 38 x 2 RS 38 x 4	A, B, C, D A, B, C, D
Cast Iron Frame & Cover	PATTERN 1224 LE 380-2	E F

LIST OF SUPPLIERS

- | | |
|--|--|
| A. Rotondo and Sons, Inc.
151 Old Farms Road
Avon, CT. 06001
(860) 673-3291 | D. United Concrete Products, Inc.
173 Church Street
Yalesville , CT 06492-2267
(203) 269-3119 |
| B. Arrow Concrete Products, Inc.
560 Salmon Brook Street
Granby, CT. 06035
(860) 653-5063 | E. Campbell Foundry Co.
P.O. Box 515
14 Massimo Drive
North Haven CT. 06473
(203) 288-7584 |
| C. Elmcap Industries
111 South Street
West Hartford, CT 06110-1928
(860) 953-1060 | F. Furguson Water Works
86 Bridge Street
Groton, CT. 06340
(860) 405-0146 |

Submit detail drawings, for approval for handhole or covers by other manufacturer.