

Subject: Drought Management weekly update 11/30/20

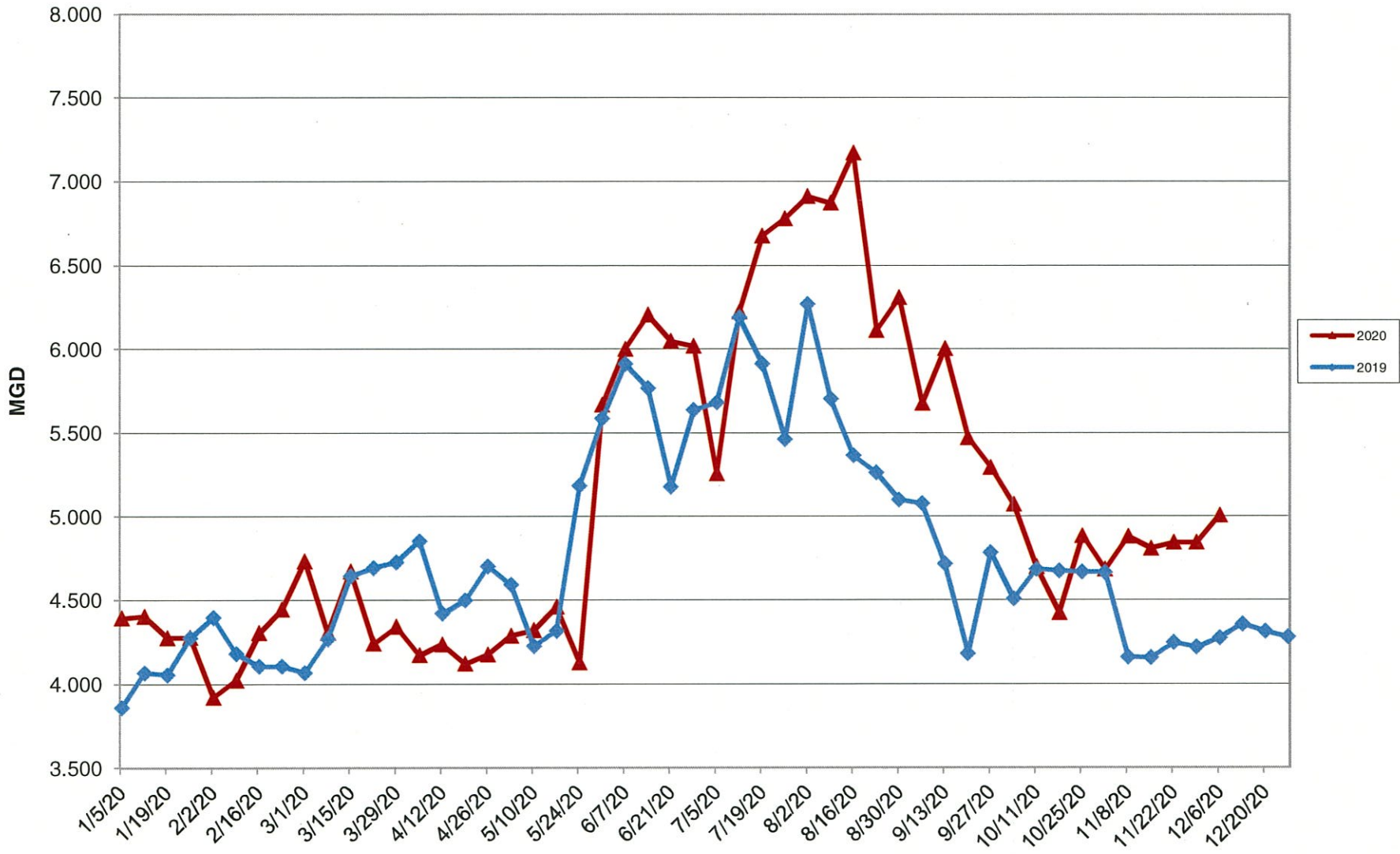
**Present Drought Classification -Stage 3 (moderate drought -per DEM HS region 4 coordinator) same
GU impoundage 69.5 % (increase)**

- Source water as ground water to WTP 0% (same)
- Daily avg. demand 5.0 mgd (minor increase)
- Rainfall for the past week 0.2 inches
- Total rainfall for November 3.28 inches
- 89 year average for November 4.41 inches
- Cumulative deficiency to date (9.06) inches (as of 11/30/2020)

Other:

- Continued withdrawal from Morgan Reservoir~ 4 mgd, Hold Ledyard Reservoir at required elevation through release requirements (minimum streamflow).
- Pumping Smith Lake to Poheganut Reservoir for groundwater recharge (rate -1.5 mgd (same))
- Connected Smith and Poquonnock through stop log arrangement (open)
- Did not receive Weekly drought update from DEM HS
- Continued CTDEEP required minimum streamflow release (same)Note this will increase 12/1/2020 we are examining potential impact
- Mandatory Surface water capacity filing (see attached)
- Reservoir Operation #5 decreasing storage of GU drought matrix (same)

Average Daily Pumping, Groton WTP



11/30/2020

Weekly, 2019 - 2020

2020 Average Monthly Impoundage

